

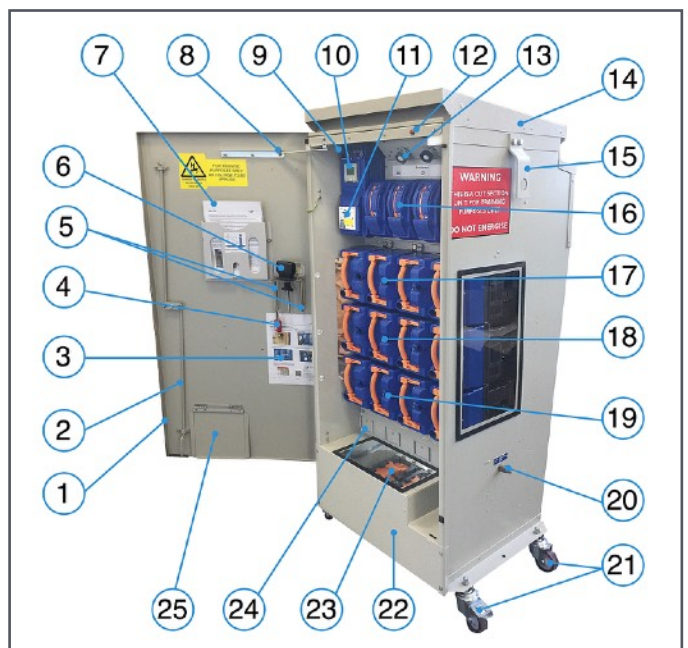
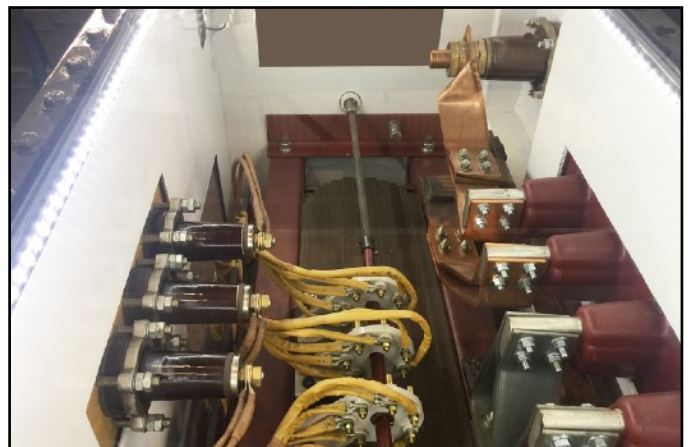


**Cut Section HV/MV/LV  
Electrical Equipment**

# Cut section HV/MV/LV Electrical Equipment

TSI offer a range of cut section HV/MV/LV Electrical Equipment and instructional materials for use in technical training.

- A comprehensive package of learning material and original manufacturer's technical data is included with each item.
- This allows students to perform component/parts identification tasks as well as a series of electrical tests such as transformer turns ratio tests, windings resistance tests and dielectric insulation tests.
- Instruction on the use of the test equipment required to perform standard electrical inspection tests is included in the Learning materials.
- Each item has been specifically sectioned to enable the trainee to view all the major system components.
- Where required plexiglass covers are included to protect from dirt or dust or for safety purposes.eg. to cover energised mechanical switchgear.
- Colour coding on the cutaway areas indicates the function of the identified parts.
- A series of PowerPoint presentations accompanies each piece of equipment and these provide the instructor with a front-of-class presentation resource.
- The presentations cover the functions of the equipment and the identity and location of the system components and their interaction with other components.
- **Units will be based on used equipment and exact specifications will vary. Contact us for availability.**



# Cut section HV/MV/LV Electrical Equipment

## Examples of sectioned equipment:

### TSI-CSLVFP Cut Section Lucy AcuLok TMO LV Feeder Pillar

This unit is specifically modified to be used as a visual aid for use in training for the installation, service and maintenance of Medium/Low Voltage(MV/LV) electrical equipment.

It is based on a Lucy Electric AcuLok TMO transformer mounted low voltage (415V) distribution cabinet with 4 x Fuse ways with fully shrouded AcuLok BS88 fuse handles and an independent manual spring assisted disconnecter per phase.

The maximum rating for this feeder pillar is 800A.

The unique AcuLok fuse handle system improves reliability and operator safety levels.

These feeder pillars (Distribution Cabinets) are suitable for outdoor applications or indoor as part of a unit substation.



### TSI-CSDT315 Cut-section 315kVA ONAN - Oil Filled 3 PHASE Distribution Transformer

This is a cut-section power transformer that is specifically modified to show the internal workings of the transformer.

It is supplied without the oil and is not an operational unit due to the sectioning.

Clear Perspex panels are fitted to protect the sectioned unit from dust and dirt and for safety purposes.

A mains powered LED illumination system enhances the viewing of the internal structure,

The transformer has the following specification:

- 315kVA
- 11000/433V, 3ph
- ONAN indoor/outdoor transformer with radiators, filler, breather, thermometer pocket, off circuit tap
- Jacking and lifting points
- Delta/Star connected to vector group Dyn 11
- Impedance 4.4%



- **NOTE: None of these pieces of training equipment should be energised or any attempt made to connect them to a power source.**





# Technical Solutions International



## UK

Tel: +44 7568 381496  
Email: [info@tsi-london.com](mailto:info@tsi-london.com)

[www.tsi-london.com](http://www.tsi-london.com)

## Dubai

Tel: +971 4 371 2728  
Email: [info@tsi-dubai.com](mailto:info@tsi-dubai.com)

[www.tsi-dubai.com](http://www.tsi-dubai.com)

## Sweden

Tel. +46 76 126 2800  
Email: [info@tsi-stockholm.com](mailto:info@tsi-stockholm.com)

[www.tsi-stockholm.com](http://www.tsi-stockholm.com)